

Thompson Valves



Maxseal Direct Solenoid-Operated Control Valve for Hazardous Areas Ex es



Model SOV, Sizes 1, 2, 3, 4, 5 & 6 (1" - 4")

Certification

EECS (BASEEFA)
approved
Ex es II T6 or Ex es II T4
(ambient = 85°C)
Complies with BS 5501:
Part 6:1977

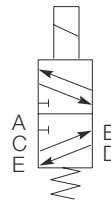
Description

A direct-acting solenoid valve certified for hazardous area use as well as general air and gas purposes in the offshore and petrochemical industries.

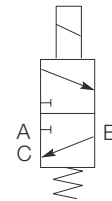
Standard Features

Port thread	1" - 2" NPT
Port configuration	3/2 Uni
Operating pressure	0 - 20 bar(g) (0 - 290 psi)
Actuation method	Automatic
Valve material	Stainless steel BS EN 10088
Seat / Seal material	High nitrile (Buna N)
Operating voltage at 20°C (68°F)	
Size 1	24V DC; 18W
Size 2	24V DC; 25W
Size 3	24V DC; 40W
Size 4	24V DC; 75W
Size 5	24V DC; 100W
Size 6	24V DC; 150W
Conduit / Signal entry	M20 x 1.5 mm ISO (F)
Paint finish	Standard (green) 40 µm
Coil housing material	Cast iron BS EN 1561: 1997
Weight (approx.)	
Size 1	20 kg (44 lb)
Size 2	30 kg (66 lb)
Size 3	35 kg (77 lb)
Size 4	58 kg (128 lb)
Size 5	65 kg (144 lb)
Size 6	115 kg (254 lb)
Cv value at 20 bar (290 psi)	
1" model	12.8 (Kv 11)
1½" model	28 (Kv 24)
2" model	48 (Kv 41)
2½" model	70 (Kv 60)
3" model	100 (Kv 86)
4" model	165 (Kv 142)

5-port



3-port



2-port, EO



2-port, EC



Options

Port connections	
Female threaded	1" - 2" BSPP / BSPT
Flanged	1" - 4" BS 10, BS 1560 or BS 4504
Port configuration	5/2 Uni; 2/2 EO; 2/2 EC
Actuation method	Autolatch, lever manual reset (LMR), lever manual override (LMO), tamperproof manual reset (see "Optional Valve Features")
Valve material	Brass BS EN 12163: 1998 Flanged/cast bodies available on request
Seat / Seal material	Viton®, nylon 66 (high pressure seat only) Alternative materials available on request
Operating voltages	DC: 12, 24, 48, 110, 125, 240 AC: 24, 50, 110, 240, 440
Conduit / Signal entry	½" NPT, 13.5 PG
Paint	Epoxy (light grey) 150 µm
CV value	50 bar(g) (725 psi) + Please contact us

Maxseal
Direct Solenoid-Operated Control Valve for Hazardous Areas
Ex es
SOV, Sizes 1, 2, 3, 4, 5 & 6 (1" - 4")

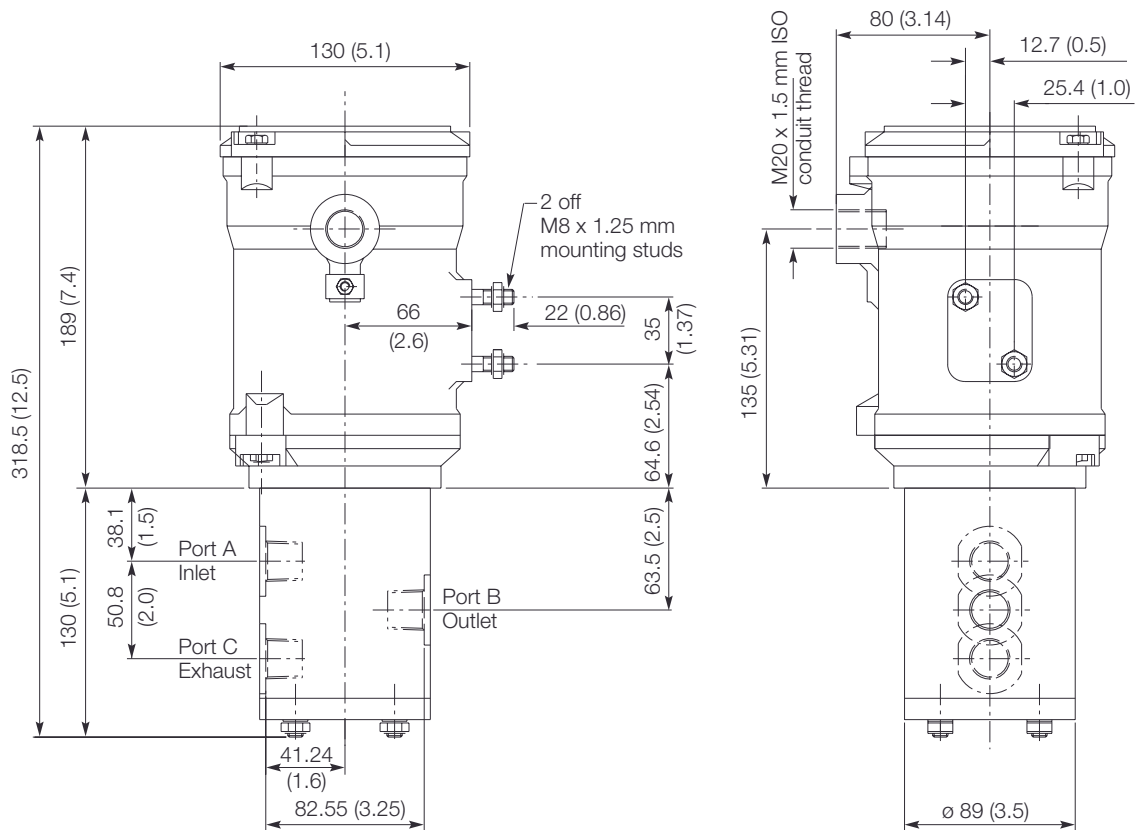


Technical Specification

Protection	Ingress IP65 - IP68 Surge suppression diodes	
Response times (typical, dependent on coil size)	Pull-in: Please contact us Drop-out: Please contact us	
Response times settings	Pull-in: within 87.5% of nominal (factory set at less than 75% of nominal) Drop-out: normally 10-20% of nominal	
Operating pressure ranges	0 - 20 bar(g)	(0 - 290 psi) (standard)
	0 - 50 bar(g)	(0 - 725 psi) bar stock body (option)
	0 - 103 bar(g)	(0 - 1494 psi) bar stock body (option)
	0 - 207 bar(g)	(0 - 3000 psi) bar stock body (option)

Dimensions in mm (inches)

(Size 2 3/4" solenoid 3/2 Uni configuration illustrated)



We recommend installing a strainer or filter as close as possible to valve inlet. While protecting seating areas from potential damage, this helps maintain **air quality** - Talk to us about filtration!

Viton® is a registered trademark of DuPont Dow Elastomers LLC.

QACA 270 Rev. 1

Thompson Valves, 17 Balena Close, Creekmore, Poole, Dorset BH17 7EF, England
 Tel +44 (0)1202 647331 Fax +44 (0)1202 647302 Email maxseal@thompson-valves.com
 www.thompson-valves.com A fluid controls business of IMI plc